

## 8.6 DELHI

### 8.6.1 Introduction

Delhi, the National Capital Territory (NCT) of India, has a geographical area of 1,483 km<sup>2</sup>. It is situated between lat 28°22' to 28°54' N and long 76°48' to 77°23' E and is divided into two zones, the extension of Aravalli Hills and the Plains. Yamuna river traverses through the NCT.

Climate is hot in summer and cold in winter. The rainfall varies from 400 mm to 600 mm. The annual temperature ranges between 3° C to 45° C. The land use pattern of the State is given in Table 8.6a

The population of the NCT is 13.85 million (*Census 2001*). Of this, urban population is 93.18%, and rural, 6.82 %. The population density is 9,340 persons per km<sup>2</sup>. The livestock population of the territory is 373,000 (*Livestock Census 2003*) which has increased by about 17% since the census of 1992.

### 8.6.2 Forest Resources

The recorded forest area is 85 km<sup>2</sup>, which is 5.73% of the geographic area of the State. By legal status, Reserved Forests constitute 91.76%, and Protected Forests, 8.24%.

The natural forest is scantily vegetated and mainly of Tropical Dry Deciduous type. Northern Tropical Thorn forest is also found on the ridges of Delhi. Predominant species are *Prosopis juliflora*, *Acacia leucophloea*, *Acacia nilotica*, and *Cassia fistula*.

**Table 8.6a: Land use pattern**

Land Use	Area in '000 ha	Percentage
Total geographical area	148	
Reporting area for land utilization	147	100.00
Forests	1	0.68
Not available for cultivation	90	61.22
Permanent pastures and other grazing lands	a	0.00
Land under misc. tree crops & groves	1	0.68
Culturable wasteland	10	6.80
Fallow lands other than current fallows	7	4.76
Current Fallows	4	2.72
Net area sown	34	23.13

a: Below 500 hectares.

Source: Land Use Statistics, Ministry of Agriculture, GOI, 2005.

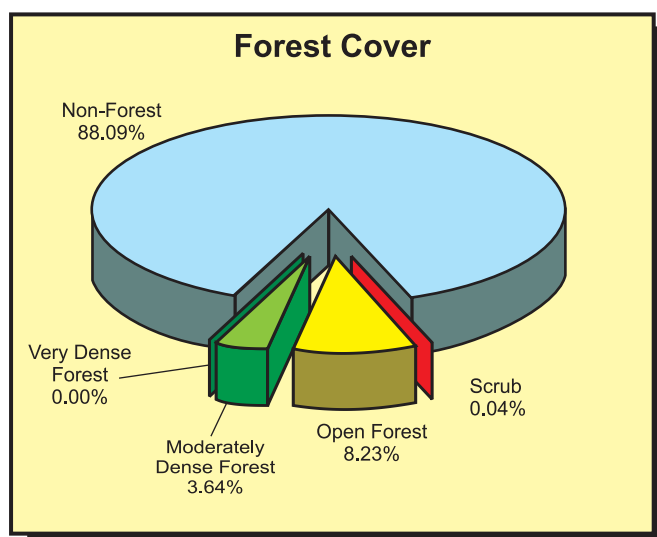
### 8.6.3 Protected Areas

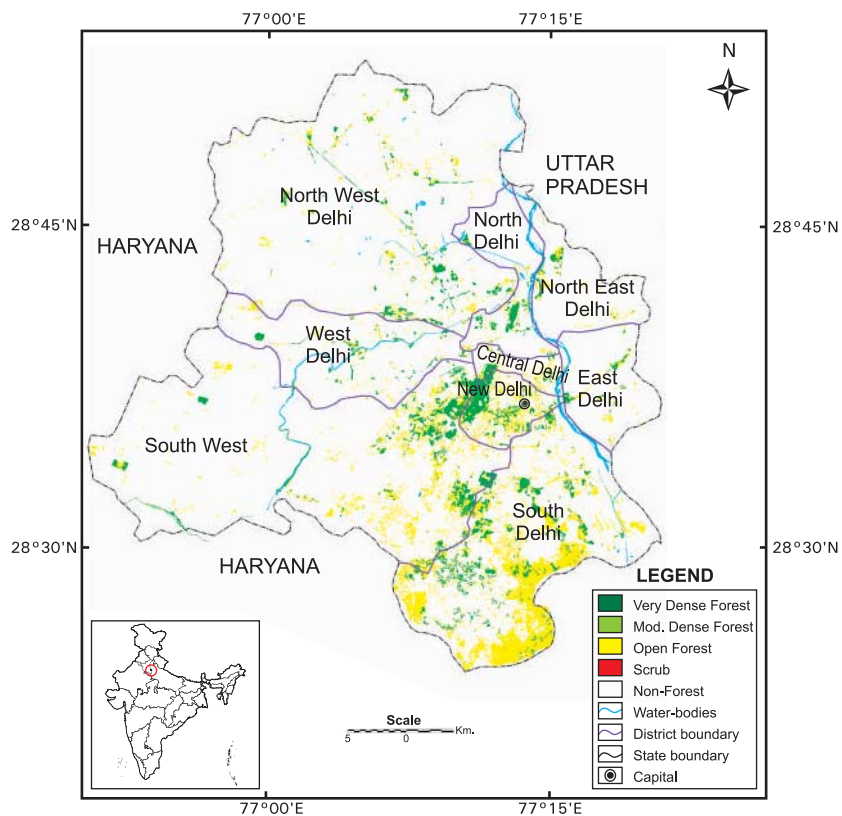
There is only one Wildlife Sanctuary, Asola - Bhatti, which was created in 1992 and covers an area of 2,720 ha.

### 8.6.4 Forest Cover

The forest cover of the State, based on satellite data of November-December 2004, is 176 km<sup>2</sup>, which is 11.87% of the geographic area. Moderately dense forest is 54 km<sup>2</sup> and open forest, 122 km<sup>2</sup>. The forest cover of the State is shown in Fig.8.6.

An increase of 2 km<sup>2</sup> of forest cover has been assessed in the present assessment as compared to the previous assessment (based on satellite data of November-December 2002).





**Fig 8.6 : Forest Cover Map of Delhi**

The change matrix, given in Table 8.6b reveals that there has been an increase of 2 km<sup>2</sup> in the open forest.

The increase of two km<sup>2</sup> in forest cover is attributed to the plantations in different parts of the NCT as observed by the FSI officials during field verification.

The district wise details of very dense forest, moderately dense forest, open forest and scrub, along with the changes compared to 2003 assessment, have been provided in Table 8.6c.

**Table 8.6b: Forest cover change matrix**

(area in km<sup>2</sup>)

2003 Assessment(Data of Nov.-Dec. 2002)	2005 Assessment (Data of Nov.-Dec. 2004)					Total 2003
	VDF	MDF	OF	Scrub	NF	
Very Dense Forest	0	0	0	0	0	0
Moderately Dense Forest	0	54	0	0	0	54
Open Forest	0	0	120	0	0	120
Scrub	0	0	0	1	0	1
Non-Forest	0	0	2	0	1,306	1,308
<b>Total 2005</b>	<b>0</b>	<b>54</b>	<b>122</b>	<b>1</b>	<b>1,306</b>	<b>1,483</b>
Net Change	0	0	2	0	-2	

**Table 8.6c: District-wise forest cover**

Number of Districts: 9

 (area in km<sup>2</sup>)

District	Geographic area	2005 Assessment				Percent of G.A.	Change	Scrub
		Very dense forest	Mod. dense forest	Open forest	Total			
Central Delhi	25	0	2	3	5	20.62	0.07	0
East Delhi	64	0	1	2	3	4.88	0	0
North-East Delhi	35	0	1	2	3	9.34	0.28	0
North-West Delhi	59	0	7	9	16	27.74	0.48	0
New Delhi	60	0	7	9	16	26.41	0.42	0
North Delhi	440	0	3	2	5	1.12	0	0
South-West Delhi	421	0	15	27	42	9.87	0.09	0
South Delhi	250	0	15	64	79	31.82	0.46	0.62
West Delhi	130	0	3	4	6	4.83	0.14	0
<b>Total</b>	<b>1,483</b>	<b>0</b>	<b>54</b>	<b>122</b>	<b>176</b>	<b>11.87</b>	<b>1.94</b>	<b>0.62</b>

### 8.6.5 Tree Cover

Tree cover of Delhi has been estimated following a sampling based approach. A separate exercise was carried out where high resolution satellite data (5.8m) has been

used for identification of tree patches for field inventory. The estimated tree cover in the NCT is 107 km<sup>2</sup>.

The forest and tree cover of the State is presented in the Table 8.6d

**Table 8.6d: Forest & tree cover**

 (area in km<sup>2</sup>)

Category	Area	% of Geographical Area
Tree Cover	107	7.22
Forest Cover	176	11.87
<b>Forest &amp; Tree Cover</b>	<b>283</b>	<b>19.09</b>