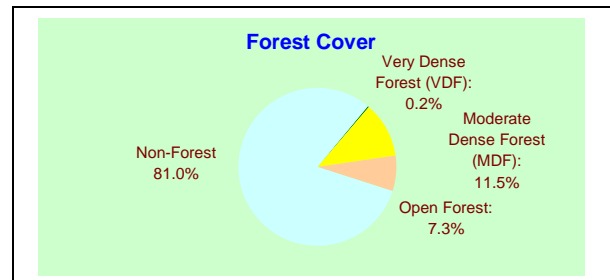


KARNATAKA

Geographic Area	191,791 km ² (5.8% of country)
Population	52.73 million (5.1% of country)
Urban	17.92 million (34%)
Rural	34.81 million (66%)
Average Population Density	275 persons per km ²
Tribal Population	4.30%
Livestock Population	29.57 million (6.3% of country)
No. of Districts	27
No. of Hill Districts	6
No. of Tribal Districts	5

Recorded Forest Area	
Reserved Forest (RF):	29550 km ²
Protected Forest (PF):	3585 km ²
Unclassed Forest (UF):	9949 km ²
Total:	43,084 km²
Of State's Geographic Area	22.46%
<i>Of Country's Forest Area</i>	<i>5.56%</i>

Forest Cover	
Very Dense Forest (VDF):	431 km ²
Moderate Dense Forest (MDF):	22,030 km ²
Open Forest:	13,988 km ²
Total:	36,449 km²
Of State's Geographic Area:	19%
Of Country's Forest Cover:	1.11%



Tree Cover	
Culturable Non-Forest Area:	140,680 km ²
No. of trees per ha of CNFA:	11.6
Tree Cover:	5,371 km ²
<i>Of State's Geographic Area</i>	<i>2.80%</i>
<i>Of CNFA:</i>	<i>3.82%</i>

Forest & Tree Cover	
Total Forest & Tree Cover:	41,820 km ²
<i>Of State's Geographic Area:</i>	<i>21.80%</i>
<i>Of Country's Forest & Tree Cover:</i>	<i>5.37%</i>
Per capita Forest & Tree Cover:	0.08 ha

FOREST COVER MAP OF KARNATAKA

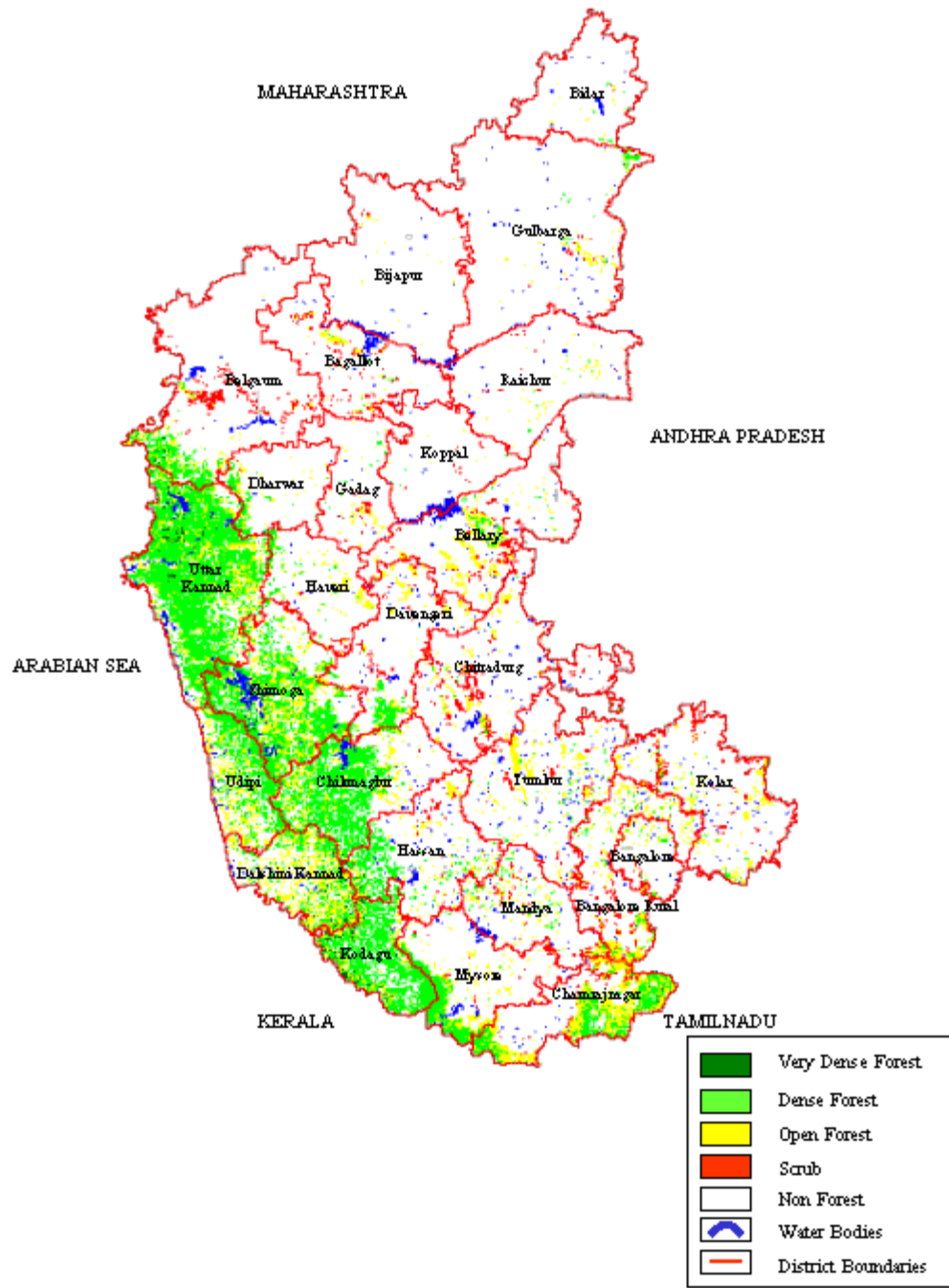


Fig. 7.13

Table 7.13a: District-wise Forest Cover (Karnataka)

Number of Districts: 27

(Area in km²)

District	Geographic Area	Forest Cover				Percent	Change
		Very Dense	Moderate Dense	Open Forest	Total Forest		
Bagalkot	6,575	0	32	182	214	3.25	-170
Bangalore Rural	5,815	0	166	692	858	14.75	22
Bangalore City	2,190	0	45	123	168	7.67	6
Belgaum ^H	13,415	19	703	390	1,112	8.29	-52
Bellary	8,450	0	138	757	895	10.59	34
Bidar	5,448	0	20	42	62	1.14	-94
Bijapur	10,494	0	1	37	38	0.36	-140
Chamrajnagar	5,101	12	1,085	1,523	2,620	51.36	52
Chikmagalur TH	7,201	4	2,853	640	3,497	48.56	-57
Chitradurg	8,440	0	49	396	445	5.27	11
Kannad Dakshin TH	4,560	71	1,024	1,302	2,397	52.57	-48
Davengeri	5,924	0	342	417	759	12.81	-13
Dharwar	4,260	0	235	182	417	9.79	13
Gadag	4,656	0	23	150	173	3.72	3
Gulbarga	16,224	0	91	239	330	2.03	-143
Hassan	6,814	29	826	447	1,302	19.11	-23
Haveri	4,823	0	182	282	464	9.62	14
Kodagu TH	4,102	158	2,464	425	3,047	74.28	39
Kolar	8,223	0	82	500	582	7.08	7
Koppal	7,189	0	11	35	46	0.64	1
Mandya	4,961	0	146	375	521	10.50	5
Mysore ^T	6,854	0	642	503	1,145	16.71	-4
Raichur	6,827	0	20	87	107	1.57	-5
Shimoga ^H	8,477	23	3,052	1,401	4,476	52.80	3
Tumkur	10,597	0	111	595	706	6.66	8
Udipi ^T	3,880	11	1,432	783	2,226	57.37	-46
Kannad Uttar ^H	10,291	104	6,255	1,483	7,842	76.20	35
Total	191,791	431	22,030	13,988	36,449	19.00	-542

Table 7.13b : Forest cover change matrix of Karnataka

2001 Assessment	2003 Assessment				Total 2001
	Dense forest	Open forest	Scrub	Non-forest	
Dense forest	22219	3266	1	670	26,156
Open forest	179	10565	9	82	10,835
Scrub	14	23	3092	116	3,245
Non-forest	49	134	39	151333	151,555
Total 2003	22,461	13,988	3,141	152,201	191,791
Net change	-3,695	3,153	-104	646	