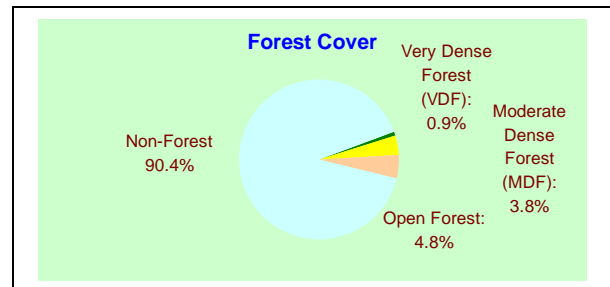


## JAMMU & KASHMIR

|                                   |  |
|-----------------------------------|--|
| <b>Geographic Area</b>            | 2,22,236 km <sup>2</sup> (6.8% of country) |
| <b>Population</b>                 | 10.07 million (1.0% of country)            |
| Urban                             | 2.51 million (24.9%)                       |
| Rural                             | 7.56 million (75.1%)                       |
| <b>Average Population Density</b> | 45 persons per km <sup>2</sup>             |
| Tribal Population                 | NA   |
| Livestock Population              | 8.7 million (1.85% of country)             |
| <b>No. of Districts</b>           | 14   |
| No. of Hill Districts             | 14   |
| No. of Tribal Districts           | 0  |

|                                   |                        |
|-----------------------------------|------------------------|
| <b>Recorded Forest Area</b>       |                        |
| Reserved Forest (RF):             | 2551 km <sup>2</sup>   |
| Protected Forest (PF):            | 17643 km <sup>2</sup>  |
| Unclassed Forest (UF):            | 36 km <sup>2</sup>     |
| Total:                            | 20,230 km <sup>2</sup> |
| <b>Of State's Geographic Area</b> | 9.1%                   |
| <i>Of Country's Forest Area</i>   | 2.61%                  |

|                              |                        |
|------------------------------|------------------------|
| <b>Forest Cover</b>          |                        |
| Very Dense Forest (VDF):     | 2,102 km <sup>2</sup>  |
| Moderate Dense Forest (MDF): | 8,395 km <sup>2</sup>  |
| Open Forest:                 | 10,770 km <sup>2</sup> |
| <b>Total:</b>                | 21,267 km <sup>2</sup> |
| Of State's Geographic Area:  | 9.57%                  |
| Of Country's Forest Cover:   | 0.65%                  |



|                                    |                        |
|------------------------------------|------------------------|
| <b>Tree Cover</b>                  |                        |
| Culturable Non-Forest Area (CNFA): | 65,296 km <sup>2</sup> |
| No. of trees per ha of CNFA:       | 18.7                   |
| Tree Cover:                        | 3,826 km <sup>2</sup>  |
| <i>Of State's Geographic Area:</i> | 1.72%                  |
| <i>Of CNFA:</i>                    | 5.86%                  |

|  |                        |
|--|------------------------|
| <b>Forest &amp; Tree Cover</b>               |                        |
| Total Forest & Tree Cover:                   | 25,093 km <sup>2</sup> |
| <i>Of State's Geographic Area:</i>           | 11.29%                 |
| <i>Of Country's Forest &amp; Tree Cover:</i> | 3.22%                  |
| Per capita Forest & Tree Cover:              | 0.25 ha                |

# FOREST COVER MAP OF JAMMU & KASHMIR

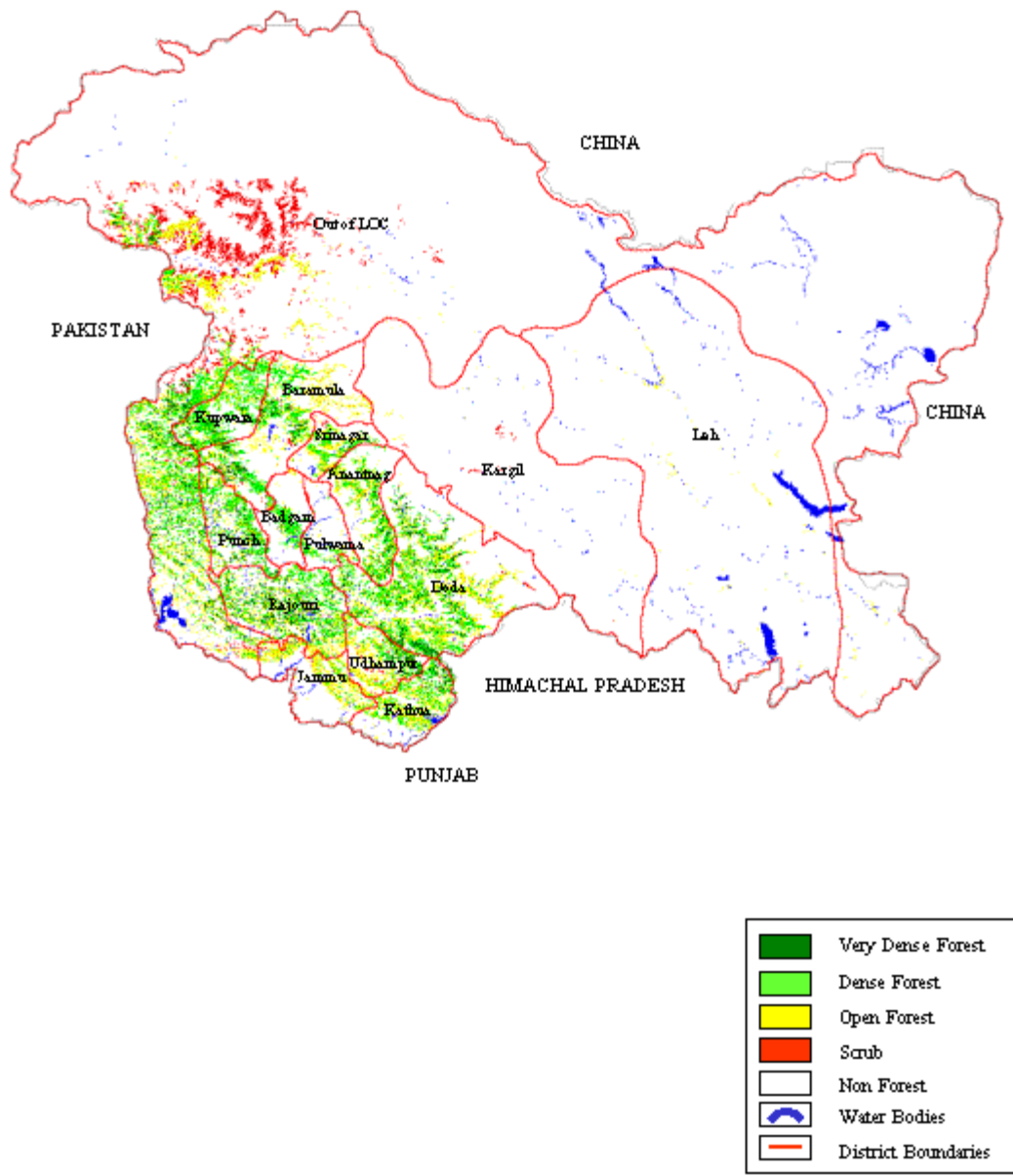


Fig. 7.11

**Table 7.11a: District-wise Forest Cover (Jammu & Kashmir)**

Number of Districts: 14

(Area in km<sup>2</sup>)

| District              | Geographic Area | Forest Cover |                |               |               | Percent     | Change   |
|-----------------------|-----------------|--------------|----------------|---------------|---------------|-------------|----------|
|                       |                 | Very Dense   | Moderate Dense | Open Forest   | Total Forest  |             |          |
| Anantnag <sup>H</sup> | 3,984           | 138          | 620            | 704           | 1,462         | 36.70       | 0        |
| Baramula <sup>H</sup> | 4,588           | 142          | 583            | 698           | 1,423         | 31.02       | 0        |
| Badgaon <sup>H</sup>  | 1,371           | 25           | 173            | 86            | 284           | 20.71       | 0        |
| Doda <sup>H</sup>     | 11,691          | 452          | 1,562          | 1,956         | 3,970         | 33.96       | 0        |
| Jammu <sup>H</sup>    | 3,097           | 6            | 156            | 663           | 825           | 26.64       | 0        |
| Kargil <sup>H</sup>   | 14,037          | 0            | 0              | 26            | 26            | 0.19        | 0        |
| Kathua <sup>H</sup>   | 2,651           | 80           | 512            | 566           | 1,158         | 43.68       | 0        |
| Kupwara <sup>H</sup>  | 2,379           | 90           | 793            | 387           | 1,270         | 53.38       | 0        |
| Leh <sup>H</sup>      | 45,110          | 0            | 0              | 118           | 118           | 0.03        | 0        |
| Pulwama <sup>H</sup>  | 1,398           | 4            | 100            | 74            | 178           | 12.73       | 0        |
| Punch <sup>H</sup>    | 1,674           | 122          | 358            | 248           | 728           | 43.49       | 0        |
| Rajouri <sup>H</sup>  | 2,630           | 216          | 495            | 564           | 1,275         | 48.48       | 0        |
| Srinagar <sup>H</sup> | 2,228           | 30           | 330            | 371           | 731           | 32.81       | 0        |
| Udhampur <sup>H</sup> | 4,550           | 252          | 644            | 1,251         | 2,147         | 47.19       | 0        |
| *O.Loc <sup>H</sup>   | 120,848         | 545          | 2,069          | 3,058         | 5,672         | 4.69        | 0        |
| <b>Total</b>          | <b>222,236</b>  | <b>2,102</b> | <b>8,395</b>   | <b>10,770</b> | <b>21,267</b> | <b>9.57</b> | <b>0</b> |

\* Area outside LOC i.e. area under illegal occupation of Pakistan and China

**Table 6.11b : Forest cover change matrix of J&K**

| 2001 Assessment   | 2003 Assessment |             |       |            | Total 2001 |
|-------------------|-----------------|-------------|-------|------------|------------|
|                   | Dense forest    | Open forest | Scrub | Non-forest |            |
| Dense forest      | 9790            | 1789        | 33    | 236        | 11848      |
| Open forest       | 550             | 8093        | 388   | 358        | 9389       |
| Scrub             | 22              | 266         | 2475  | 324        | 3087       |
| Non-forest        | 135             | 622         | 51    | 197104     | 197912     |
| <b>Total 2003</b> | 10497           | 10770       | 2947  | 198022     | 222236     |
| <b>Net change</b> | -1351           | 1381        | -140  | 110        |            |

